



BACH Associates, PC
 ARCHITECTS-PLANNERS
 306 White Horse Pike
 Haddon Heights, New Jersey 08033
 Tel: 856-546-4444
 Fax: 856-546-0442
 www.BachDesignGroup.com



STEVEN M. BACH, P.E., P.A., P.F., C.D.E.
 A PROFESSIONAL ENGINEER IN THE STATE OF NEW JERSEY
 A PROFESSIONAL ARCHITECT IN THE STATE OF NEW JERSEY
 A PROFESSIONAL PLANNER IN THE STATE OF NEW JERSEY

PRELIMINARY/FINAL MAJOR SUBDIVISION PLAN
CORNERSTONE ESTATES
 BLOCK 66, LOT 16; BLOCK 160, LOT 4;
 BLOCK 160, LOT 23 & BLOCK 167, LOT 12
 TAX MAP SHEETS 14, 20, 21 & 25
 GEORGETOWN ROAD
 CORNERSTONE TOWNSHIP
 SALEM COUNTY, NEW JERSEY

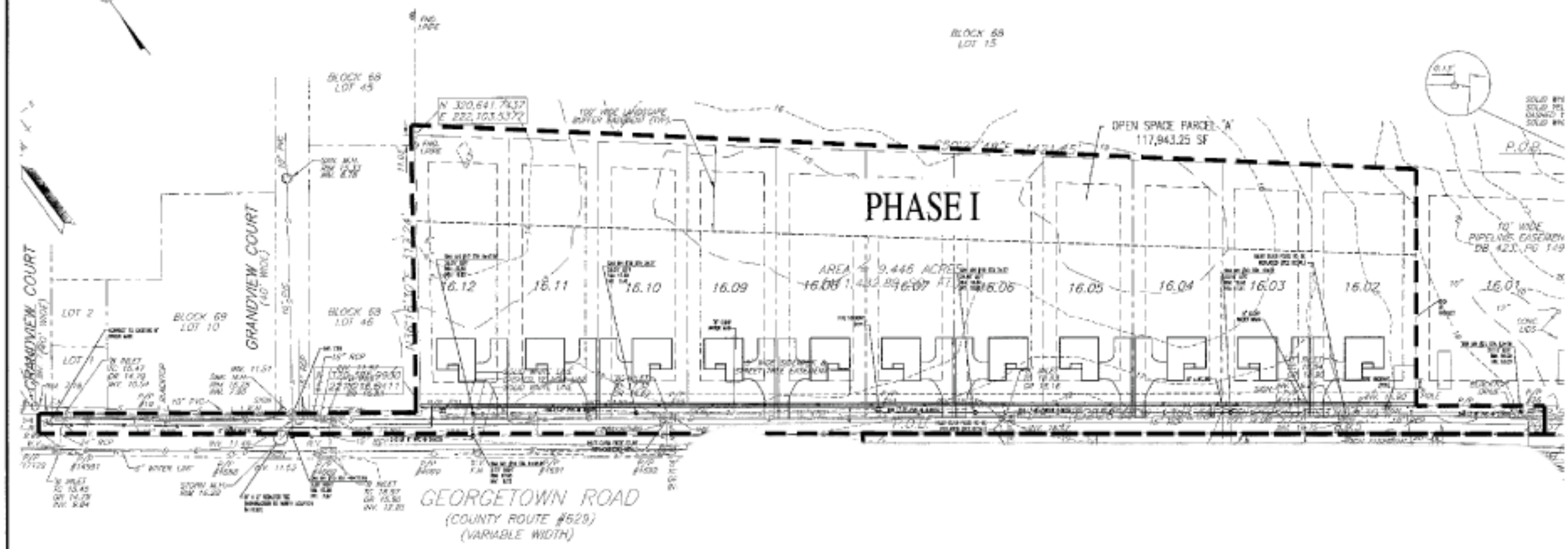
THIS PLAN IS THE PROPERTY OF BACH ASSOCIATES, PC AND IS NOT TO BE REPRODUCED OR TRANSMITTED IN ANY FORM OR BY ANY MEANS, ELECTRONIC OR MECHANICAL, INCLUDING PHOTOCOPYING, RECORDING, OR BY ANY INFORMATION STORAGE AND RETRIEVAL SYSTEM, WITHOUT THE WRITTEN PERMISSION OF BACH ASSOCIATES, PC.

NO.	DATE	DESCRIPTION

PHASING PLAN

NO.	DATE	DESCRIPTION

PH-1A



GRADING & UTILITY NOTES:

1. THE CONTRACTOR SHALL VERIFY UNDERGROUND LOCATION SERVICE AT 1440-20-100 AT LEAST 10 FEET FROM TO COMMENCEMENT OF EXCAVATION WORK.
2. ALL EXISTING UTILITY INFORMATION SHOWN ON THIS PLAN IS BASED ON RECORD DRAWINGS AND FIELD SURVEY DATA. THE CONTRACTOR SHALL VERIFY THE LOCATION AND DEPTH OF ALL UTILITIES PRIOR TO EXCAVATION.
3. ALL EXISTING UTILITIES SHALL BE MAINTAINED AND PROTECTED THROUGHOUT THE CONSTRUCTION PERIOD. ANY UTILITIES THAT ARE DAMAGED OR DISRUPTED SHALL BE REPAIRED OR REPLACED AT THE CONTRACTOR'S EXPENSE.
4. ALL EXISTING UTILITIES SHALL BE MAINTAINED AND PROTECTED THROUGHOUT THE CONSTRUCTION PERIOD. ANY UTILITIES THAT ARE DAMAGED OR DISRUPTED SHALL BE REPAIRED OR REPLACED AT THE CONTRACTOR'S EXPENSE.
5. ALL EXISTING UTILITIES SHALL BE MAINTAINED AND PROTECTED THROUGHOUT THE CONSTRUCTION PERIOD. ANY UTILITIES THAT ARE DAMAGED OR DISRUPTED SHALL BE REPAIRED OR REPLACED AT THE CONTRACTOR'S EXPENSE.
6. ALL EXISTING UTILITIES SHALL BE MAINTAINED AND PROTECTED THROUGHOUT THE CONSTRUCTION PERIOD. ANY UTILITIES THAT ARE DAMAGED OR DISRUPTED SHALL BE REPAIRED OR REPLACED AT THE CONTRACTOR'S EXPENSE.
7. ALL EXISTING UTILITIES SHALL BE MAINTAINED AND PROTECTED THROUGHOUT THE CONSTRUCTION PERIOD. ANY UTILITIES THAT ARE DAMAGED OR DISRUPTED SHALL BE REPAIRED OR REPLACED AT THE CONTRACTOR'S EXPENSE.
8. ALL EXISTING UTILITIES SHALL BE MAINTAINED AND PROTECTED THROUGHOUT THE CONSTRUCTION PERIOD. ANY UTILITIES THAT ARE DAMAGED OR DISRUPTED SHALL BE REPAIRED OR REPLACED AT THE CONTRACTOR'S EXPENSE.
9. ALL EXISTING UTILITIES SHALL BE MAINTAINED AND PROTECTED THROUGHOUT THE CONSTRUCTION PERIOD. ANY UTILITIES THAT ARE DAMAGED OR DISRUPTED SHALL BE REPAIRED OR REPLACED AT THE CONTRACTOR'S EXPENSE.
10. ALL EXISTING UTILITIES SHALL BE MAINTAINED AND PROTECTED THROUGHOUT THE CONSTRUCTION PERIOD. ANY UTILITIES THAT ARE DAMAGED OR DISRUPTED SHALL BE REPAIRED OR REPLACED AT THE CONTRACTOR'S EXPENSE.
11. ALL EXISTING UTILITIES SHALL BE MAINTAINED AND PROTECTED THROUGHOUT THE CONSTRUCTION PERIOD. ANY UTILITIES THAT ARE DAMAGED OR DISRUPTED SHALL BE REPAIRED OR REPLACED AT THE CONTRACTOR'S EXPENSE.
12. ALL EXISTING UTILITIES SHALL BE MAINTAINED AND PROTECTED THROUGHOUT THE CONSTRUCTION PERIOD. ANY UTILITIES THAT ARE DAMAGED OR DISRUPTED SHALL BE REPAIRED OR REPLACED AT THE CONTRACTOR'S EXPENSE.
13. ALL EXISTING UTILITIES SHALL BE MAINTAINED AND PROTECTED THROUGHOUT THE CONSTRUCTION PERIOD. ANY UTILITIES THAT ARE DAMAGED OR DISRUPTED SHALL BE REPAIRED OR REPLACED AT THE CONTRACTOR'S EXPENSE.
14. ALL EXISTING UTILITIES SHALL BE MAINTAINED AND PROTECTED THROUGHOUT THE CONSTRUCTION PERIOD. ANY UTILITIES THAT ARE DAMAGED OR DISRUPTED SHALL BE REPAIRED OR REPLACED AT THE CONTRACTOR'S EXPENSE.
15. ALL EXISTING UTILITIES SHALL BE MAINTAINED AND PROTECTED THROUGHOUT THE CONSTRUCTION PERIOD. ANY UTILITIES THAT ARE DAMAGED OR DISRUPTED SHALL BE REPAIRED OR REPLACED AT THE CONTRACTOR'S EXPENSE.